



RANDALL COURT, DAIRY CLOSE, SW6 £500,000 LEASEHOLD

A beautifully maintained, one bedroom, second floor flat, in the popular Randall Court development in the heart of Parsons Green, benefiting from a large private balcony.

Fulham & Parsons Green | 020 7731 3388 | fulham@winkworth.co.uk

Winkworth

for every step...

winkworth.co.uk



DESCRIPTION

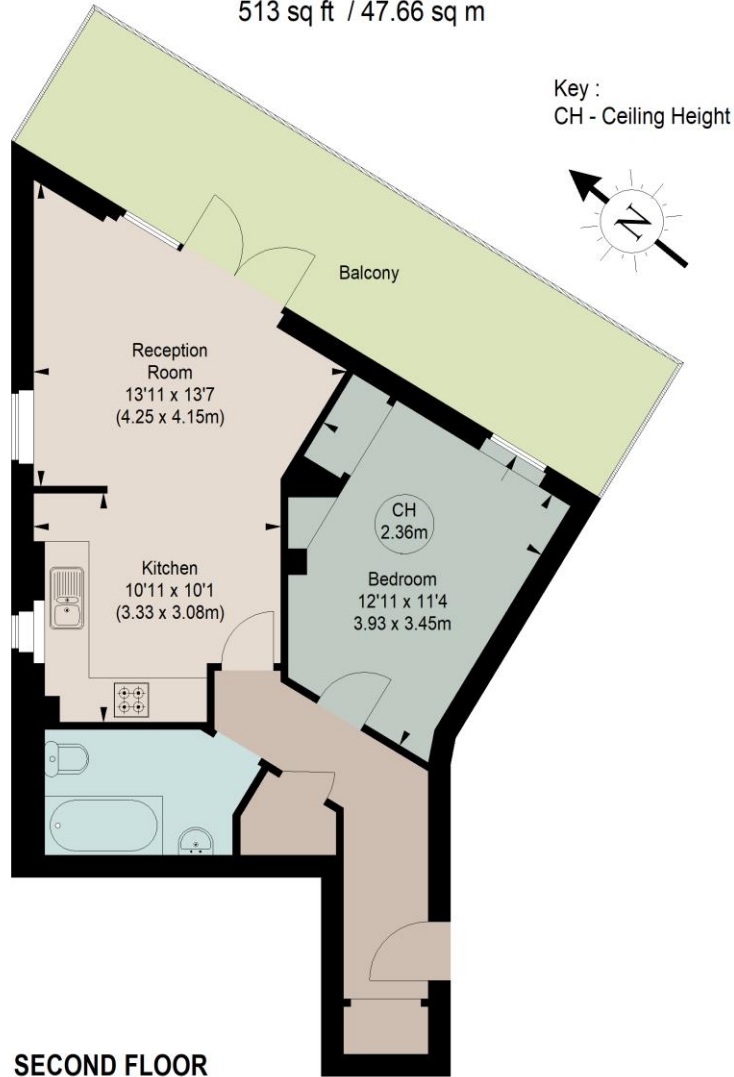
The property comprises an open plan well equipped kitchen, reception and dining room, with floor to ceiling sliding doors leading out onto the balcony. The large master bedroom has built in storage and is served by a good sized tiled bathroom. There are also useful storage cupboards in the hallway.

Randall Court is located just off Parsons Green Lane and is brilliantly located for quick and easy access to all the local amenities found close by, along with the District Line at Parsons Green tube station.



RANDALL COURT, SW6

Approximate gross internal area
513 sq ft / 47.66 sq m



The floor plan is not to scale and measurements and areas shown are approximate and therefore should be used for illustrative purposes only. The plan has been prepared in accordance with the RICS code of Measuring Practice and whilst we have confidence in the information produced, it must not be relied on. If there is any aspect of particular importance, you should carry out or commission your own inspection of the property.

This floorplan is for illustration purposes only and is not to scale. The position and size of doors, windows, appliances and other features are approximate.

Energy Efficiency Rating	
	Potential
Very energy efficient - lower running costs	
(92-100) A	
(81-91) B	
(69-80) C	78 79
(55-68) D	
(39-54) E	
(21-38) F	
(1-20) G	
Not energy efficient - higher running costs	
England, Scotland & Wales	EU Directive 2002/91/EC

Tenure: Leasehold

Term: 105 year and 11 months

Service Charge: £1440 per annum

Ground Rent: £200 Annually (subject to increase)

Council Tax Band: D

Where no figures are shown, we have been unable to ascertain the information. All figures that are shown were correct at the time of printing.

Fulham & Parsons Green | 020 7731 3388 | fulham@winkworth.co.uk

Winkworth

for every step...

winkworth.co.uk

Winkworth wishes to inform prospective buyers and tenants that these particulars are a guide and act as information only. All our details are given in good faith and believed to be correct at the time of printing but they don't form part of an offer or contract. No Winkworth employee has authority to make or give any representation or warranty in relation to this property. All fixtures and fittings, whether fitted or not are deemed removable by the vendor unless stated otherwise and room sizes are measured between internal wall surfaces, including furnishings.