



Anchor Court

28 London Street
Basingstoke RG21 7NY

Description

Offered with NO ONWARD CHAIN this truly is a stunning first floor furnished apartment in a great spot in the 'Old Town Centre' within walking distance of Basingstoke's mainline railway station and the 'Festival Place' leisure and retail centre.

It has plenty of space with two double bedrooms (both have large built-in wardrobes), an en-suite shower and an additional shower in the main bathroom.

The living space is open plan with plenty of room for relaxing and the kitchen has integrated appliances.

The property has an allocated parking space that is under cover and approached through security gates.



Winkworth

Accommodation

Living/dining room

Kitchen

Two double bedrooms

En-suite shower room

Bathroom

Covered secured parking

Lease details - from 1/1/23 to 31/12/23

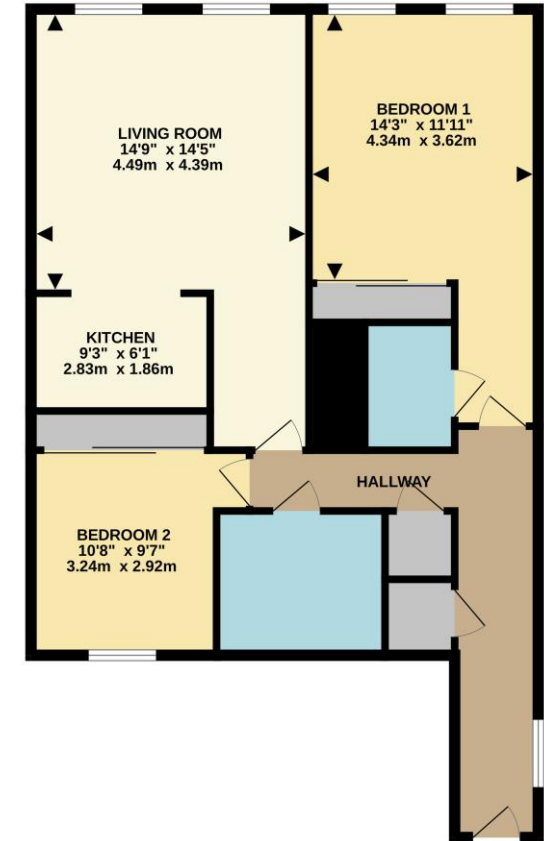
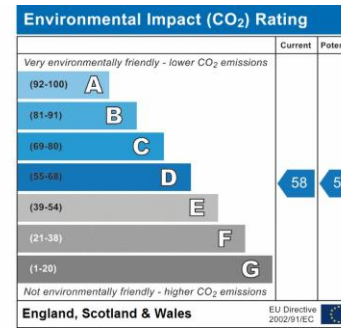
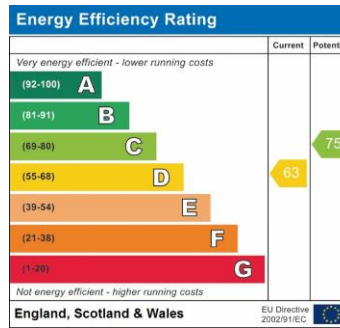
- ground rent £100, Service charge

£2,397.90. Estate Service Charge £133.81

and Car Park Service Charge £46.20

Remaining term of lease 132 years.

GROUND FLOOR
904 sq.ft. (84.0 sq.m.) approx.



TOTAL FLOOR AREA : 904 sq.ft. (84.0 sq.m.) approx.

Whilst every attempt has been made to ensure the accuracy of the floorplan contained here, measurements of doors, windows, rooms and any other items are approximate and no responsibility is taken for any error, omission or mis-statement. This plan is for illustrative purposes only and should be used as such by any prospective purchaser. The services, systems and appliances shown have not been tested and no guarantee as to their operability or efficiency can be given.

Made with Metropix ©2023

Basingstoke Office

10B Church Street, Basingstoke, Hampshire, RG21 7QE

01256 811730 | basingstoke@winkworth.co.uk

winkworth.co.uk/Basingstoke

Winkworth

See things differently.