



COLWELL ROAD, EAST DULWICH, LONDON, SE22  
OIEO £425,000 SHARE OF FREEHOLD

**A CHARMING GROUND FLOOR GARDEN FLAT  
SITUATED IN ONE OF EAST DULWICH'S  
MOST QUIET AND CENTRAL ROADS.**

Dulwich | 020 8299 2722 | [dulwich@winkworth.co.uk](mailto:dulwich@winkworth.co.uk)





## DESCRIPTION:

A charming ground floor garden flat situated in one of East Dulwich's most quiet and central roads. The property comprises a large open plan kitchen reception, with direct access to a large private South West facing garden. The bathroom is finished to a very high standard, and the large double bedroom includes lovely views out to the garden allowing plenty of light. The property is situated within a short walk to Lordship Lane with its bars, restaurants and cinema. It is also within very close proximity to East Dulwich station, allowing easy access to London Bridge. Or Denmark Hill with the overground links to many major London Terminals.

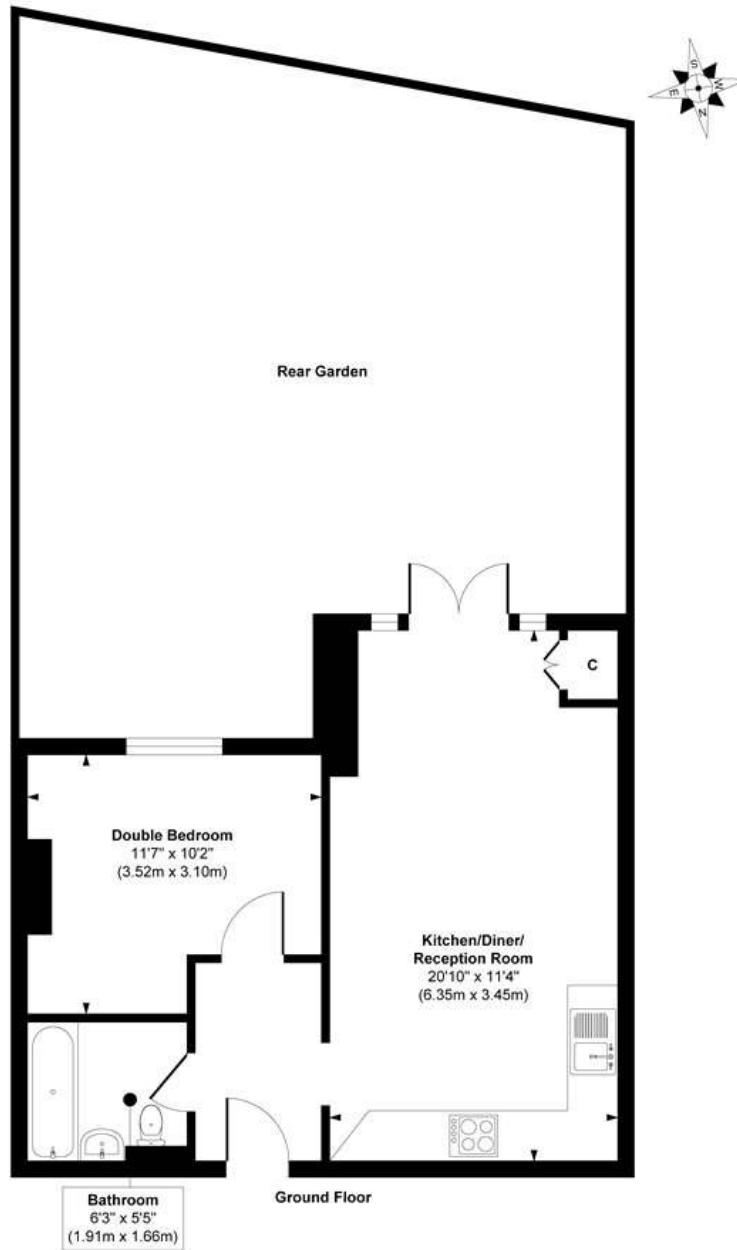
## AT A GLANCE

- One Bedroom
- Ground Floor Flat
- Open Plan Kitchen-Reception
- Modern Bathroom
- South West Facing Garden
- Close to East Dulwich Station
- Chain Free





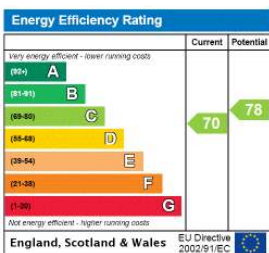
Colwell Road



**Approx. Gross Internal Floor Area 425 sq. ft / 39.50 sq. m**

Illustration for identification purposes only, measurements are approximate, not to scale.  
Produced by Elements Property

This floorplan is for illustration purposes only and is not to scale. The position and size of doors, windows, appliances and other features are approximate.



Dulwich | 020 8299 2722 | dulwich@winkworth.co.uk



winkworth.co.uk

See things differently

Winkworth wishes to inform prospective buyers and tenants that these particulars are a guide and act as information only. All our details are given in good faith and believed to be correct at the time of printing but they don't form part of an offer or contract. No Winkworth employee has authority to make or give any representation or warranty in relation to this property. All fixtures and fittings, whether fitted or not are deemed removable by the vendor unless stated otherwise and room sizes are measured between internal wall surfaces, including furnishings.