



LYMINGTON AVENUE, N22  
**£650,000 FREEHOLD**

**DESCRIPTION:**

This charming three-bedroom period house with South facing garden sits within the highly sought after Noel Park Conservation Area of Wood Green, London N22.

Sole Agent

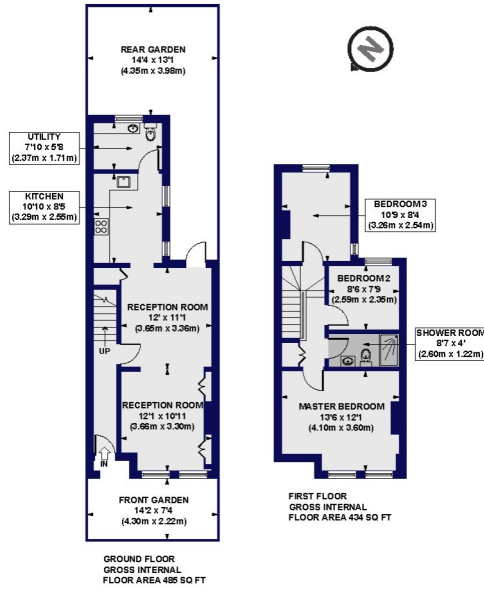
Harringay | 020 8800 5151 | harringay@winkworth.co.uk



for every step...

[winkworth.co.uk](http://winkworth.co.uk)

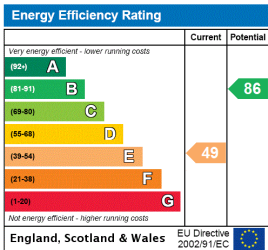
Lymington Avenue, N22  
 Approx. Gross Internal Floor Area 919 sq. ft / 85.44 sq. m



All measurements of walls, doors, windows, fittings and appliances, including their size and location, are shown as standard sizes and do not constitute a warranty or representation by the vendor. Care should be taken to ensure that the actual measurements of the property are taken as shown on the floor plan. The vendor is not responsible for any errors or omissions in these plans. Depend on the finished property and not on these plans for any prospective purposes.



This floorplan is for illustration purposes only and is not to scale. The position and size of doors, windows, appliances and other features are approximate.



**Tenure:** Freehold

**Term:** 0 year and 0 months

**Service Charge:** £0 per annum

**Ground Rent:** £ 0 Annually (subject to increase)

**Council Tax Band:**

Where no figures are shown, we have been unable to ascertain the information. All figures that are shown were correct at the time of printing.

Harringay | 020 8800 5151 | harringay@winkworth.co.uk



for every step...

winkworth.co.uk

Winkworth wishes to inform prospective buyers and tenants that these particulars are a guide and act as information only. All our details are given in good faith and believed to be correct at the time of printing but they don't form part of an offer or contract. No Winkworth employee has authority to make or give any representation or warranty in relation to this property. All fixtures and fittings, whether fitted or not are deemed removable by the vendor unless stated otherwise and room sizes are measured between internal wall surfaces, including furnishings.