



KINGS ROAD, LONDON, NW10

£1,499,950 FREEHOLD

WINKWORTH ARE DELIGHTED TO BRING TO MARKET THIS ONE OF A KIND, FULLY REFURBISHED FIVE BEDROOM FAMILY HOME, WITH A STUNNING LANDSCAPED GARDEN.

HIGH TECH AV SYSTEM / CAT 6 THROUGHOUT / FANTASTIC GARDENS / SEPERATE ANNEX / COMPLETELY RENOVATED / OFF STREET PARKING

Kensal & Queens Park | 0208 960 4947 | kensalrise@winkworth.co.uk

Winkworth

winkworth.co.uk

See things differently



LOCATION:

Kings Road is a lovely location just north of Kensal Rise but most who live in this area will still gravitate south to the amenities of College Road, Chamberlayne Road and Queens Park which have an array of shops, pubs and restaurants at your fingertips. Transport links are great at Willesden Green tube station on the Jubilee line which means Central London and the West End are easily commutable within thirty minutes. Near the station on Walm lane buyers will also find some lovely amenities including Sushi Masa, Gail's Bakery, the Queensbury Pub, Walnut Whole Foods and a large Sainsbury's for the weekly shop.



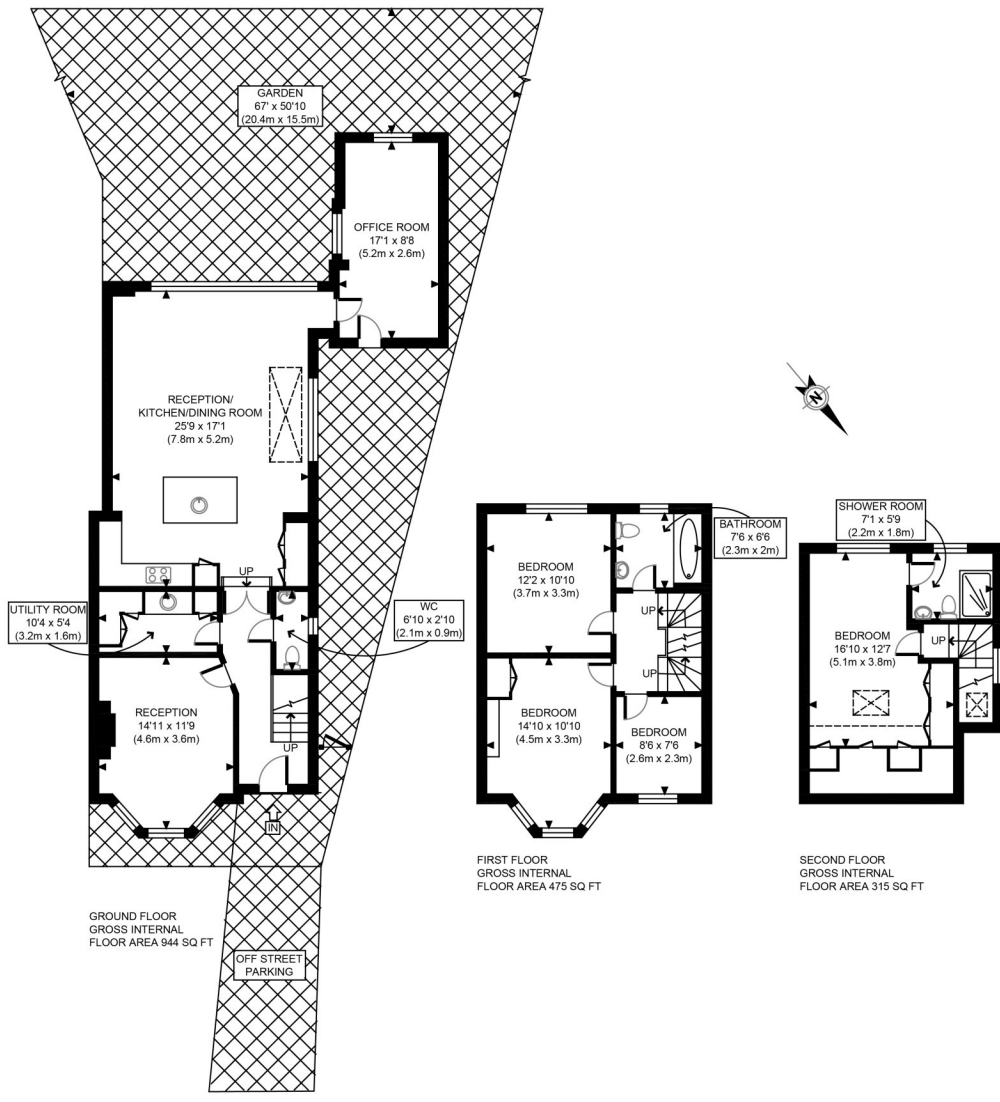
Winkworth



DESCRIPTION:

This amazing property was due to be the main home for the current owners but international work opportunities means that this unique home which has been meticulously designed and renovated will now be available to the market. Every inch of the property oozes quality and no expense has been spared on the finishings, kitchen and bathrooms. Accommodation is arranged over three floors including a brilliant loft conversion housing the master bedroom and en-suite shower room. On the first floor there are three further bedrooms and a lovely family bathroom. The entire back section of the downstairs has been lowered and filled with a polished concrete slab that forms the kitchen / diner, annex accommodation (fifth bedroom, home office or studio) and continues to the external patio surrounding the rear of the house and linking the garden. There is also a utility room and a formal reception to the front of the building. Further benefits include, no upper chain, off street parking and a unique, one of a kind garden which is unusually large for this type of property.

Winkworth



APPROX. GROSS INTERNAL FLOOR AREA 1734 SQ FT / 161 SQM	Kings Road
Disclaimer: Floor plan measurements are approximate and are for illustrative purposes only. While we do not doubt the floor plan accuracy and completeness, you or your advisors should conduct a careful, independent investigation of the property in respect of monetary valuation.	date: 26/05/22
	photoplan

This floorplan is for illustration purposes only and is not to scale. The position and size of doors, windows, appliances and other features are approximate.

Kensal & Queens Park | 0208 960 4947 | kensalrise@winkworth.co.uk



winkworth.co.uk

See things differently

winkworth wishes to inform prospective buyers and tenants that these particulars are a guide and act as information only. All our details are given in good faith and believed to be correct at the time of printing but they don't form part of an offer or contract. No winkworth employee has authority to make or give any representation or warranty in relation to this property. All fixtures and fittings, whether fitted or not are deemed removable by the vendor unless stated otherwise and room sizes are measured between internal wall surfaces, including furnishings.