



MOUNT TERRACE, LONDON, E1
£750,000 FREEHOLD

A CHARMING THREE BEDROOM GEORGIAN TERRACED HOUSE WITH OFF-STREET PARKING

Shoreditch | 020 7749 7650 | shoreditch@winkworth.co.uk

Winkworth

winkworth.co.uk

See things differently



DESCRIPTION:

A charming Grade II listed three bedroom terrace house with North facing garden and only 0.2 miles from Whitechapel Station.

Arranged over four floors the house is well preserved with rustic decor and offers original wood floors, slash windows, cornice and other period features.

The property is in a fantastic location being 0.2 miles from Whitechapel Station (Elizabeth Line) and moments from Aldgate, Aldgate East and Liverpool Street underground stations as well as Shadwell Overground and DLR thus providing unrivalled access across the City. You also have a vast range of local amenities on your doorstep with large Sainsbury's 0.4 miles away. The area also benefits from Whitechapel High Street, Commercial Street, the historic Brick Lane and the iconic Spitalfields market with an abundance of boutique shops, pop ups, cafes, bars and restaurants.

Winkworth

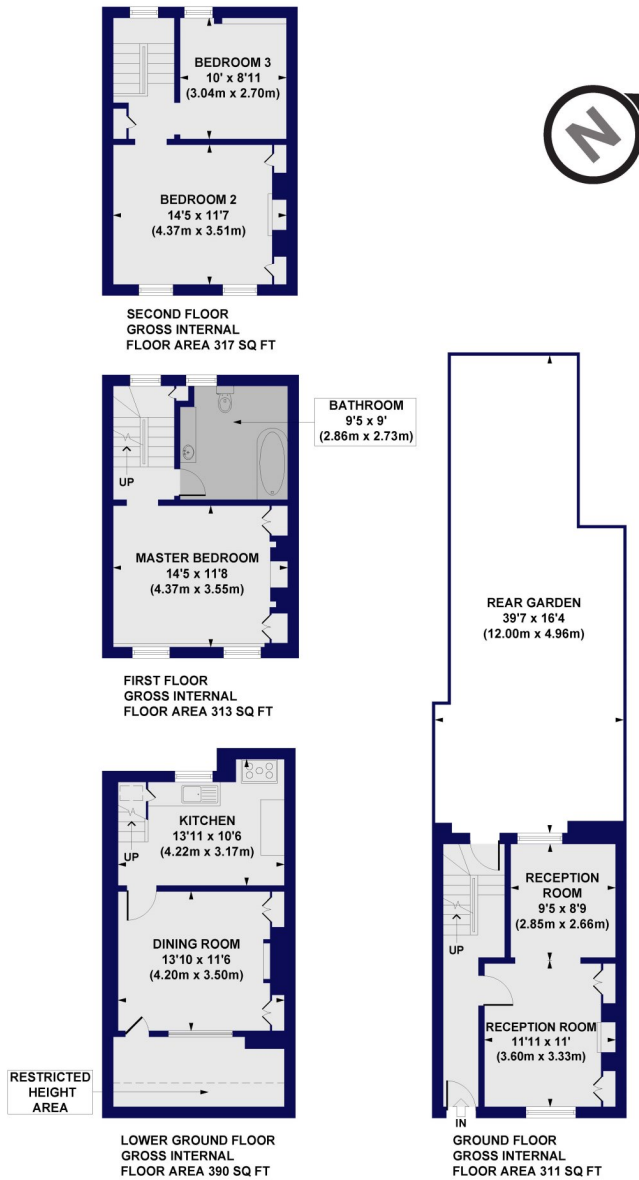


Winkworth

Mount Terrace, E1

Approx. Gross Internal Floor Area 1331 sq. ft / 123.69 sq. m (Including Restricted Height Area)

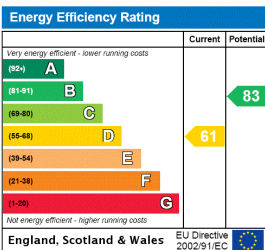
Approx. Gross Internal Floor Area 1303 sq. ft / 121.09 sq. m (Excluding Restricted Height Area)



All measurements of walls, doors, windows, fittings and appliances, including their size and location, are shown as standard sizes and do not constitute any warranty or representation by the seller, their agent or CP Creative. Any intending purchaser must satisfy himself by inspection or otherwise as to the correctness of the information contained in these plans. This plan is for illustrative purposes only and should be used as such by any prospective purchasers.

Winkworth

This floorplan is for illustration purposes only and is not to scale. The position and size of doors, windows, appliances and other features are approximate.



Shoreditch | 020 7749 7650 | shoreditch@winkworth.co.uk

Winkworth

winkworth.co.uk

See things differently

Winkworth wishes to inform prospective buyers and tenants that these particulars are a guide and act as information only. All our details are given in good faith and believed to be correct at the time of printing but they don't form part of an offer or contract. No Winkworth employee has authority to make or give any representation or warranty in relation to this property. All fixtures and fittings, whether fitted or not are deemed removable by the vendor unless stated otherwise and room sizes are measured between internal wall surfaces, including furnishings.