



ROTHERFIELD STREET, LONDON, N1
£500,000 LEASEHOLD

A WONDERFUL ONE BEDROOM PERIOD CONVERSION FLAT IN DE BEAUVOIR

Islington | 0207 354 2480 | islington@winkworth.co.uk

Winkworth

winkworth.co.uk

See things differently



DESCRIPTION:

Set across the lower ground level of this charming building is this spacious one-bedroom flat. Spanning 660sqft, the property offers well-proportioned rooms and is flooded with natural light. Accommodation includes a generous master bedroom, bathroom, separate kitchen and reception room. The property further benefits from its own front door, a private patio and is offered to the market chain-free.

Rotherfield Street is a residential tree lined street located between Essex road and De Beauvoir. The frequent buses on Southgate Road provide direct access to the City and the numerous buses on Essex Road provide easy access to the West End. London over ground services from Haggerston and rail services from Essex Road give easy access to Canary Wharf and the City. The thriving restaurants and shops on Southgate Road are just around the corner. The popular Regents canal offers scenic walks to both East and West London whilst the open spaces of Shoreditch park are also close by. Upper Street, with its famous boutique shops, restaurants and bars, and Shoreditch with its selection of galleries, independent retailers, bars and eateries, are also just a short distance away.

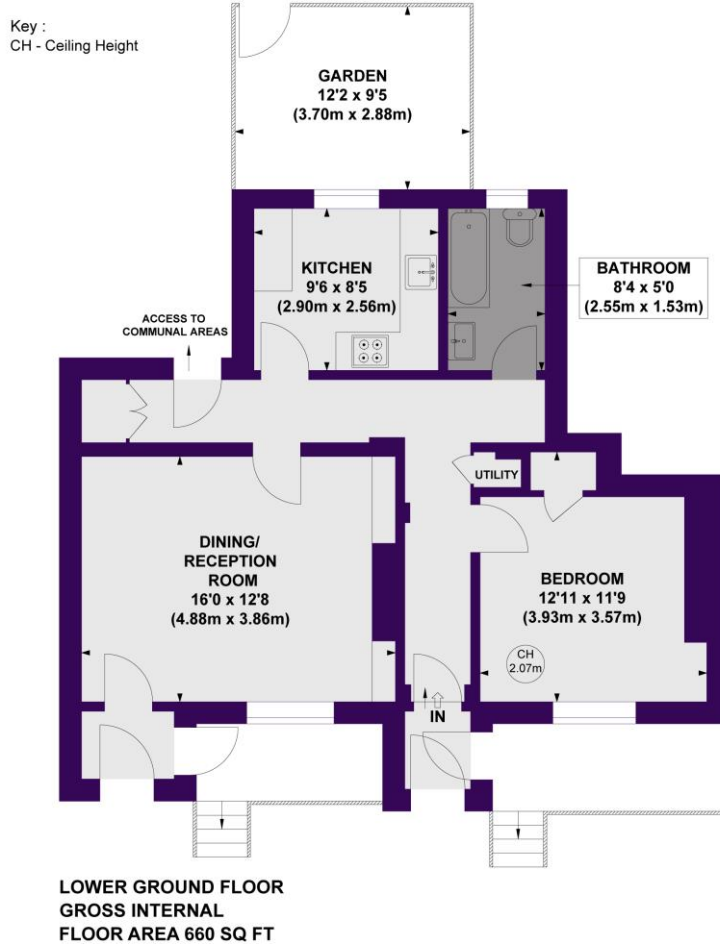
Winkworth



Winkworth

Rotherfield Street, N1

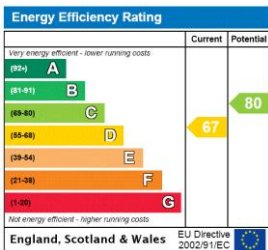
Approx. Gross Internal Floor Area 660 sq. ft / 61.34 sq. m



Winkworth

COMPLIANT WITH RICS CODE OF MEASURING PRACTICE Floorplan is for illustrative purposes only and is not to scale. Every attempt has been made to ensure the accuracy of the floorplan shown, however all measurements, fixtures, fittings and data shown are an approximate interpretation for illustrative purposes only. Liability for errors, omissions or mis-statement through negligence or otherwise is hereby excluded.

This floorplan is for illustration purposes only and is not to scale. The position and size of doors, windows, appliances and other features are approximate.



Islington | 0207 354 2480 | islington@winkworth.co.uk

Winkworth

winkworth.co.uk

See things differently

Winkworth wishes to inform prospective buyers and tenants that these particulars are a guide and act as information only. All our details are given in good faith and believed to be correct at the time of printing but they don't form part of an offer or contract. No Winkworth employee has authority to make or give any representation or warranty in relation to this property. All fixtures and fittings, whether fitted or not are deemed removable by the vendor unless stated otherwise and room sizes are measured between internal wall surfaces, including furnishings.