



PEMBER ROAD, NW10
£2,700 PER MONTH FURNISHED

WELL PRESENTED TWO BEDROOM, TWO BATHROOM FLAT SPREAD OVER 1,049 SQFT.

Kensal Rise & Queens Park | 0208 960 4947 |
kensalrise@winkworth.co.uk

Winkworth

for every step...

winkworth.co.uk



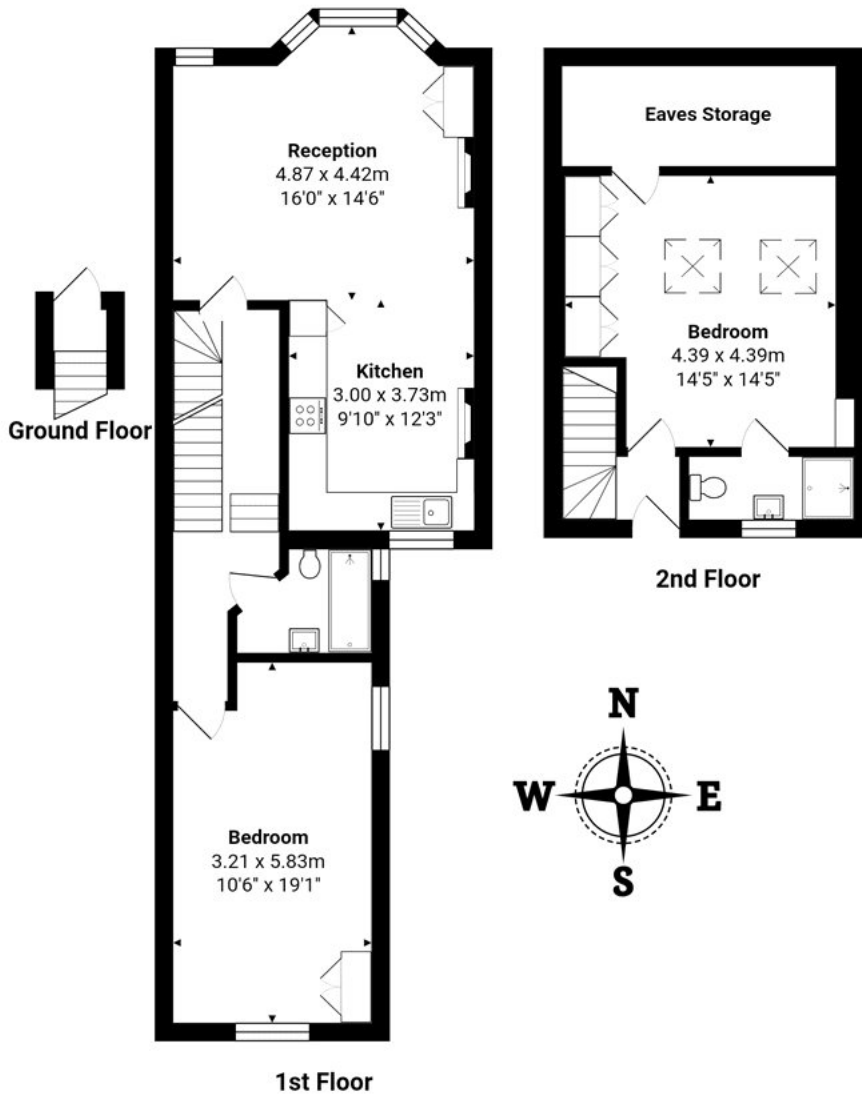
DESCRIPTION:

Finished to a modern standard throughout, we are pleased to offer a very spacious two bedroom, two bathroom, first floor split level flat.

The main hub of the flat is located to the front where you have an open reception and kitchen with period feature fire places and bay sash window. The modern, handle-less kitchen also benefits from integrated appliances. Additionally, you will also find a double bedroom and main bathroom on the first floor. The second floor is solely for the master bedroom. This bedroom is spacious in size, with the added comfort of an en-suite and fitted cupboards. As the flat is South-facing, it is flooded with natural sunlight.

Offered Furnished as the photos show.





Total Area: 97.4 m² ... 1049 ft²
 All measurements are approximate and for display purposes only

This floorplan is for illustration purposes only and is not to scale. The position and size of doors, windows, appliances and other features are approximate.

Deposit: £3,115.38

Holding Deposit:

Council Tax Band: C

where no figures are shown, we have been unable to ascertain the information. All figures that are shown were correct at the time of printing.

Energy Efficiency Rating		Current	Potential
Best energy efficient - lower running costs			
(92-100)	A		
(81-91)	B		
(69-80)	C	69	76
(55-68)	D		
(39-54)	E		
(21-38)	F		
(1-20)	G		
Not energy efficient - higher running costs			
England, Scotland & Wales		EU Directive 2002/91/EC	



Kensal Rise & Queens Park | 0208 960 4947 | kensalrise@winkworth.co.uk

for every step...

winkworth.co.uk

Winkworth wishes to inform prospective buyers and tenants that these particulars are a guide and act as information only. All our details are given in good faith and believed to be correct at the time of printing but they don't form part of an offer or contract. No Winkworth employee has authority to make or give any representation or warranty in relation to this property. All fixtures and fittings, whether fitted or not are deemed removable by the vendor unless stated otherwise and room sizes are measured between internal wall surfaces, including furnishings.